

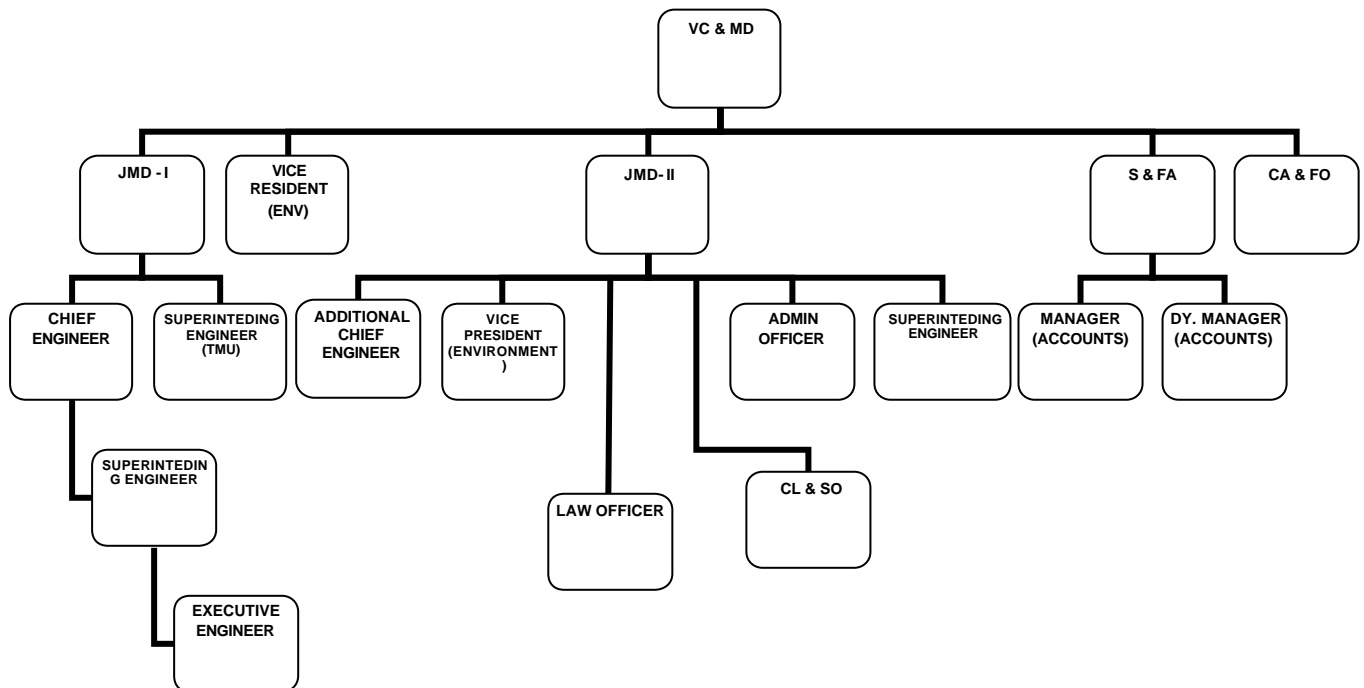
(iii) *The procedures followed in the decision making process including channels of supervision and accountability*

The Board of Directors is the highest decision making authority of the organization.

The Board of Directors from time to time delegates administrative and financial powers to the VC&MD.

The various activities and projects of the company are handled by hierarchy of officers and staff as indicated below. The action to be taken / decisions are processed by concerned officers handling the subject and the approval of VC&MD is obtained. In matters of routine nature where powers are delegated, decisions are taken at a level lower than that of VC&MD.

Decisions which are substantive or of policy in nature or involve financial outlay, not delegated to VC&MD, are taken by the Board.



The Technical wing of MSRDC is headed by Jt. MD(I). The projects of MSRDC are supervised by Executive Engineers. They may or may not be assisted by Dy. Engineers / Junior Engineers. The Executive Engineers are supervised by Superintending Engineer / Chief Engineer. Annexure to (ix)